

# Stirrer Guide

## *Caframo*<sup>®</sup> LabSolutions



# Laboratory Overhead Stirrers

- Immediate customer service and technical application support
- In stock quality product; Orders ship one day after receipt
- Manufactured in North America; Shipped Worldwide
- 3 Year Warranty
- Safety Certified to Applicable Standards

**“Thanks for the quick and helpful follow up. I appreciate the personal service.”**

**“The motor just won’t burn out. It runs 24/7!”**





1

## Stirrer

	1850	3030	6015
Speed rpm	12-1800	20-3000	40-6000
Volume L (gal)	80 (21)	60 (15 ½)	25 (6 ½)
Viscosity cP	90,000	50,000	20,000
Torque Ncm (in-lb)	568 (50)	341 (30)	170 (15)
Horsepower	1/5	1/5	1/5



	2010	2002	250
Speed rpm	40-2010	40-2002	50-2500
Volume L (gal)	25 (6 ½)	25 (6 ½)	2 (1/2)
Viscosity cP	20,000	15,000	Water like
Torque Ncm (in-lb)	90 (8)	70 (6)	10 (1)
Horsepower	1/15	1/18	1/50

All stirrers available in 120 and 220 volts.

# Stands

- Solid cast base, coated with chemical resistant epoxy
- Largest base accommodates hotplate or large vessels; Leveling knobs provide added adjustability
- Compact base maximizes bench space and fits into smaller enclosed work stations or hoods

# Clamps

- Securely hold a large portion of the stirrer support rod maximizing stability
- Multipurpose - also used with chain or extension clamps to hold accessories



2

A110



Use with all stirrers except 250

Accommodates maximum vessel diameters of 323 (12 ¾)

A112, A113, A114

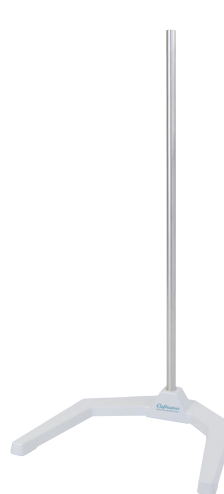


Use with all stirrers except 250

Choice of three stand rod lengths

Includes two extra threaded holes to accommodate A300 - 710 x 16 (28 x 5/8) rod for accessories

A210



Use with 2002 and 2010

Unique offset design centers impeller in vessel

Accommodates maximum vessel diameters of 190 (7 ½)

Customize



A110BASE - base only

ROD28  
710 x 25 (28 x 1)

ROD38  
960 x 25 (38 x 1)

ROD48  
1200 x 25 (48 x 1)

3



Clamps

A120

Use with 12.5 (1/2) support rod

A122

Use with 16 (5/8) support rod

Adjustable to accept 15 - 30 ( 9/16 - 1 3/16 ) diameter stand rods

mm (in)

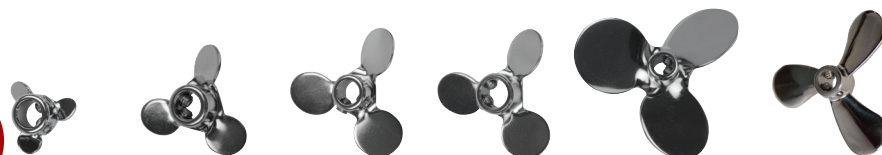


**Caframo**  
Lab Solutions

For full specifications visit: [CaframoLabSolutions.com](http://CaframoLabSolutions.com)

# Accessories

4



Blades	A511	A521	A531	A533	A541	A165
Diameter	25 (1)	38 (1 ½)	50 (2)	50 (2)	78 (3)	64 (2 ½)
Bore	8 (5/16)	8 (5/16)	8 (5/16)	9.5 (3/8)	8 (5/16)	8 (5/16)
Flow Pattern	Axial	Axial	Axial	Axial	Axial	Axial



Blades	A164	A431	A441	A551	A553	A561
Diameter	48 (1 7/8)	75 (3)	100 (4)	50 (2)	50 (2)	100 (4)
Bore	8 (5/16)	8 (5/16)	8 (5/16)	8 (5/16)	9.5 (3/8)	8 (5/16)
Flow Pattern	Radial	Radial	Radial	Radial	Radial	Axial

## Shafts

	A712	A162	A722	A742
Shaft Dia.	8 (5/16)	8 (5/16)	8 (5/16)	8 (5/16)
Shaft Length	305 (12)	400 (16)	457 (18)	610 (24)



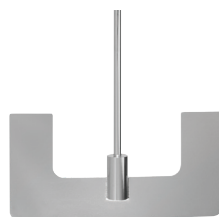
	A713	A723	A733	A743	A753
Shaft Dia.	9.5 (3/8)	9.5 (3/8)	9.5 (3/8)	9.5 (3/8)	9.5 (3/8)
Shaft Length	305 (12)	457 (18)	508 (20)	610 (24)	762 (30)



mm (in)







## Paddles

U022

U044

U055

U510

U044SW

A150

A250

Dimensions

50 x 50 (2 x 2)

100 x 100 (4 x 4)

125 x 125 (5 x 5)

125 x 250 (5 x 10)

152 x 145 (6 x 5 3/4)

70 x 70 (2 3/4 x 2 3/4)

38 x 38 (1 1/2 x 1 1/2)

Shaft Length

400 (16)

914 (36)

914 (36)

914 (36)

914 (36)

400 (16)

400 (16)

Shaft Dia.

8 (5/16)

9.5 (3/8)

9.5 (3/8)

9.5 (3/8)

9.5 (3/8)

8 (5/16)

8 (5/16)

Flow Pattern

Tangential

Tangential

Tangential

Tangential

Tangential

Tangential

Tangential



## Impellers

A130

A131

A231

A140

A141

A166

A190

PTFE

A180

A183

A185

Diameter

50 (2)

50 (2)

32 (1 1/4)

60 (2 3/8)

90 (3 1/2)

64 (2 1/2)

25 (1)

38 (1 1/2)

80 (3 1/8)

38 (1 1/2)

Shaft Length

400 (16)

400 (16)

400 (16)

400 (16)

400 (16)

400 (16)

400 (16)

400 (16)

400 (16)

400 (16)

Shaft Dia.

8 (5/16)

8 (5/16)

8 (5/16)

8 (5/16)

8 (5/16)

8 (5/16)

8 (5/16)

8 (5/16)

8 (5/16)

8 (5/16)

Flow Pattern

Radial

Radial

Radial

Radial

Radial

Axial

Axial

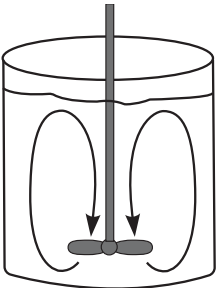
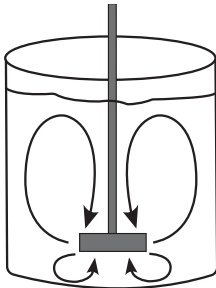
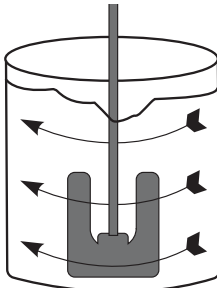
Radial

Tangential

Axial

mm (in)

# What do you know about FLOW?

Axial	Radial	Tangential
		
<p>Fluid is pumped downward or upward - ideal for liquid/solid mixing, suspending solids, blending or draw down (introducing air- vortexing). Best suited for low viscosity, high speed mixing.</p>	<p>Fluid flows from the top and bottom with higher shear and turbulence and lower pumping - ideal for liquid dispersion. Best suited for medium viscosity fluids and high speed applications.</p>	<p>Fluid moves in a swirling motion often with a surface vortex - ideal for high viscosity fluids at lower speeds. Paddle diameter can be close to the diameter of the vessel and provides a large surface area to contact product.</p>



A400SET	CG1	13CSET	13CKEY
Dispersion Blade Set	Chuck Guard	Chuck Set	Chuck Key